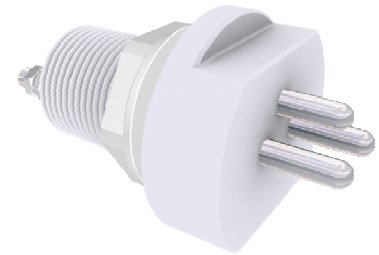


Conductive Level Probe with Temperature Sensor LCSAT

- ◆ Designed especially for washing machines
- ◆ Two-electrode conductive level sensor
- ◆ Built-in temperature sensor
- ◆ Teflon® and stainless steel wetted parts

The LCSAT probe is designed especially for washing machines where level and temperature control have to be performed simultaneously. The probe design includes plastic housing with fixing nut and rubber washer, temperature sensor and 2 conductive level electrodes. The special semispherical electrode tips ensure harmless operation in case of laundry applications and the small sheath of the temperature sensor provides fast reaction. LCSAT is available with different housing materials and temperature sensors as well as cable lengths, to suit the machine application.



Technical specifications

Model	LCSAT
Specifications	
Electrodes	2 electrodes for conductive level probe, 1 electrode for temperature sensor
Probe length	15...55 mm, depending on vessel wall thickness
Process connection	PG13.5 plus nut
Operating temperature	-20...200 °C
Operating pressure	up to 2 bar
Electrode material	stainless steel
Housing material	PTFE, POM, or PVC (nut: ABS)
Wiring	level: 2x M4 screws and nuts temperature: up to 10 m cable
Mounting	inside vessel
Protection class	IP65

Ordering code LCSAT - G0.G2.G6.G8.G10

Code	Feature or option	Code values
G0	Housing	PV - PVC, AC - POM, TF - PTFE
G2	Temperature sensor	RD - Pt100, RG - Pt1000, RP - PTC 1k, RQ - PTC 2k, J - thermocouple type "J", T - thermocouple type "T"
G6	Probe length 'n' [mm]	15...55
G8	Cable length 'k' [m] and type	1PV...50PV - PVC, 1SL...10SL - silicone, 1TF...10TF - Teflon®
G10	Electrode material	M1 - 1.4301, M2 - 1.4541, M3 - 1.4571, M9 - 1.4404