



XGT InfoU

Powerful HMI/SCADA Software

XGT InfoU

Powerful HMI/SCADA Software Armed with
Advanced Graphics Technology
The Pinnacle of HMI/SCADA Software,
XGT InfoU Meet the Innovative Technology of LSIS!





Providing unparalleled competitiveness through user-friendly technology LSIS leads theanguard with cutting-edge technology for the customer.

LSIS's XGT InfoU is an Open architecture HMI/SCADA S/W offering exceptional expandability and compatibility. It uses an optimal combination of innovative technology—including a user-friendly interface, progressive graphics technology, and fast and stable networking—to ensure easy connectivity to a wide variety of industrial devices.

InfoU brings together the most advanced technologies developed by LSIS, Its superior performance guarantees efficiency and general-purpose use while offering stable expandability. This

powerful, user-friendly HMI/SCADA software will satisfy all your system development needs and create an optimal environment for process management.

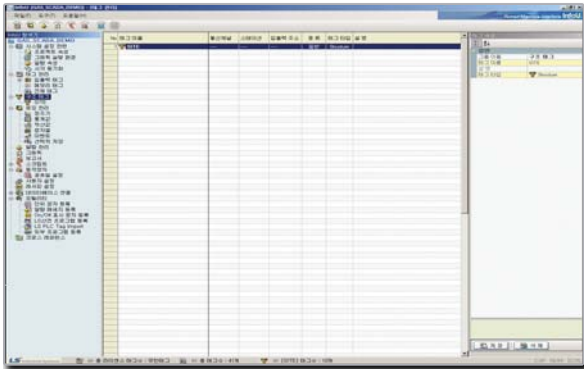
Open architecture, intelligent networking, and user-friendliness —InfoU can accommodate all the exacting needs of the industrial workplace.

Let LSIS's S/W technology take your engineering productivity to the next level.



Integrated Development Environment of Intuitive UI Including Advanced Graphics Technology

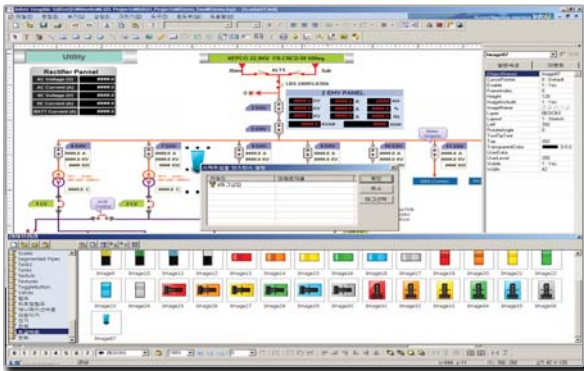
HMI/SCADA System for a system construction includes complex and various functions. However, InfoU offers you a simple method using an intuitive UI which enables anyone to construct the system easily.



Intelligent & Integrated Development Environment

InfoU provides a development environment that meets the UI standards of integrated MS Windows so that users can easily create and maintain a project.

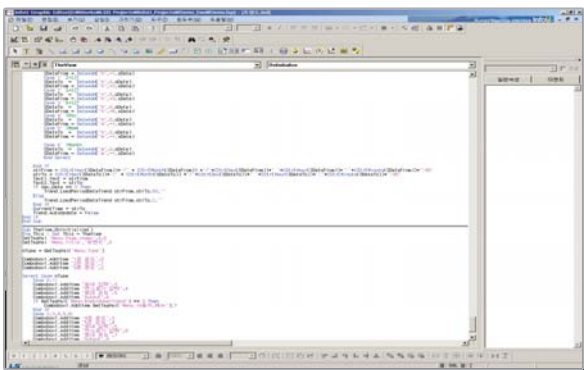
- All projects can be managed with one tool.
- A work time can be shortened via a browser that has the intuitive UI, classified by function.
- A work time can be reduced through user-friendly functions such as structure tag creation, CSV file support and so on.



Graphic Library & Object Support for Easy Screen Creation

InfoU supports library and various types of objects that are provided in advance for creation of diverse drawings required by users.

- It provides approximately 1,000 symbols drawn in advance and allows a simple screen configuration using drag and drop.
- It supports various graphic files including JPG, GIF, BMP, TIFF and etc. Diverse animation effects can be applied using Animation GIF files.
- Active-X Control can be inserted directly to the drawing and it can be controlled using a scripter, if required.



Visual Basic Script for Creation of Flexible Application

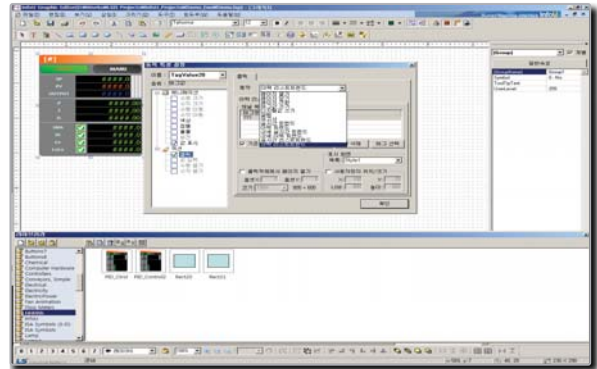
An expanded function can be applied using VBS in order to implement a user-specific function.

- It is compatible with the internal scripter code of the existing MS Excel and the existing sources can be used.
- Various functions can be implemented by providing InfoU internal function as a function.
- By offering diverse operation triggers including mouse event, initialization and so on, it can be easily programmed at anytime desired.

Strong Animation Attribute Editing

InfoU offers various attributes to support diverse representations required by users and a tag value can be connected to the attributes directly or through an algorithm.

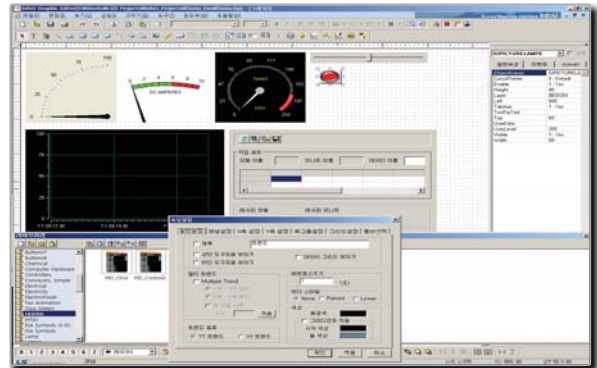
- It supports various attributes including pop-up, on/off, size adjustment, shift, paint bucket and so forth.
- All attributes can be assigned by one dialogue.
- Tag value can be directly input as well as its calculated value can be input through a numeric computation and a logical computation.
- Various requirements of users can be easily implemented via diverse Action attributes.
- A virtual keyboard for panel PC is provided.



Powerful Exclusive Objects

It helps the users for an easy configuration of drawings by offering exclusive objects with strong and various functions such as trend, alarm view lamp, gauge and etc.

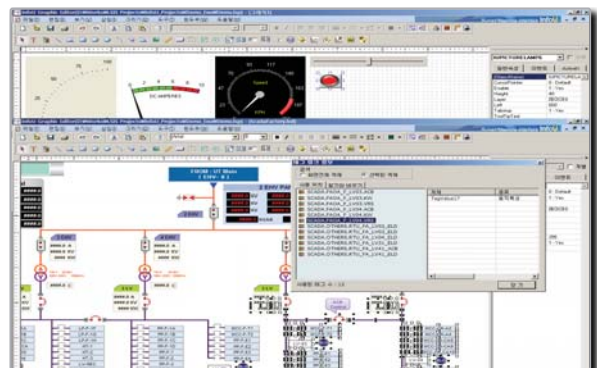
- Exclusive objects with frequently used functions can be arranged easily on screen.
- Anyone can simply use it by inputting the intuitive attributes.



Convenient Graphic Editor

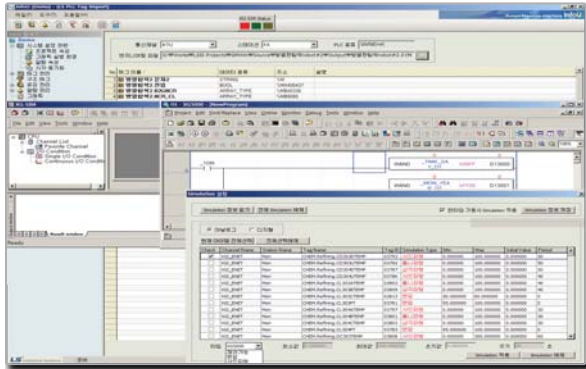
It supports a method that is compatible with Windows Programs which enables the users to learn it easily and it offers a graphic editor that supports powerful functions.

- 8-layer helps you for an easy configuration of complicated screen.
- An operator can simply verify the drawings since it provides a preview function of executive screen.
- It supports search and replace of tag/character string.
- It supports an automatic resolution conversion.
- Frequently used objects can be registered as libraries since it supports the user library.



Advanced Project Management

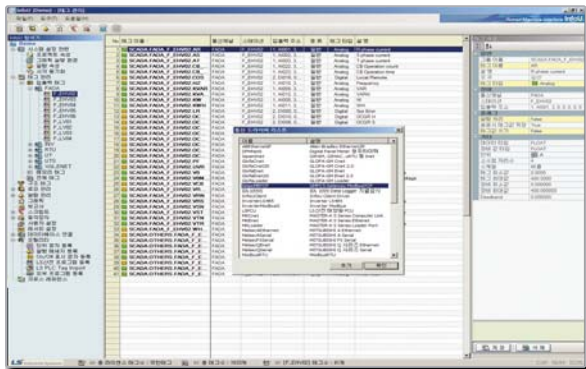
Users can easily create and maintain projects using auto tag registration, simulation and so forth through intellectual integration with XGT series. It supports various communication drivers and it enables a configuration of structural tag by offering a physical layer, in case of a tag, and a logical layer via a group.



Integration with XG5000

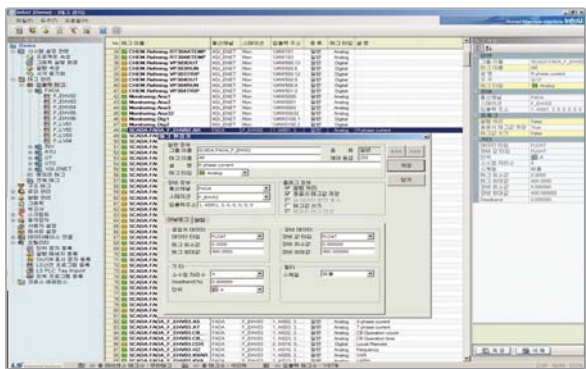
InfoU can register variables automatically using Tag Import Function when using XGT/GLOFA PLC.

- A screen can be debugged without PLC by integrating InfoU and XG5000 simulator.
- An automatically allocated variable of XG5000 can be integrated to the tag.



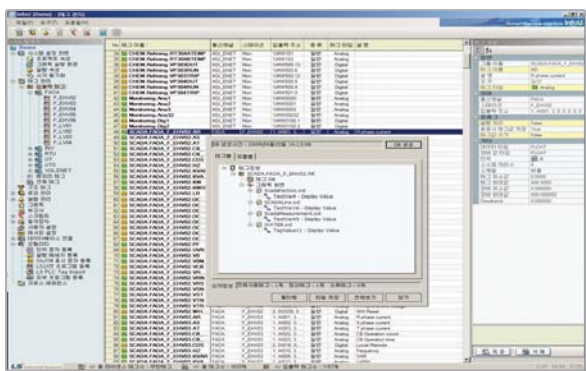
Various I/O Drivers

- It offers around 50 types of various communication drivers for PLC and Controller.
- Users can directly register a protocol/device by offering user-defined communication drivers.
- I/O status can be displayed on screen by providing the operating status as the system tag.



Easy & Convenient Tag Registration

- All attributes of tag can be set with one-click.
- A specific attribute such as an alarm boundary value can be modified during a runtime.
- A tag can be easily created and modified using a tag management function that is integrated in the development environment.
- Tags can be managed logically by offering a group function.
- Users can view the logically connected status and physically connected status via selecting a group view or a device connection view.
- It supports tag creation, modification and deletion through CSV files and large-scale tags can be managed using MS EXCEL.



Cross Reference

Users can shorten the debugging time since a cross reference can be applied to search for a fault tag at a set position including drawings, logging, alarm and etc.

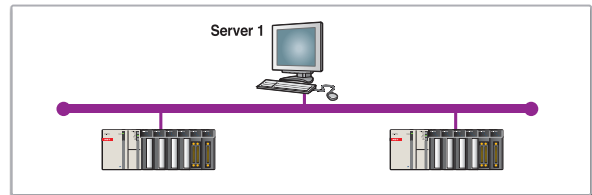
- It can directly search for the position of previous tag when the tag is modified or deleted.
- A registered screen can be directly loaded when an alarm is generated at an execution mode.

Open Structure with Various Configurations

InfoU can be expandible from a stand-alone system to a client/server system and it can be applied to various systems by providing diverse industrial-standard interfaces including OLE DB and etc.

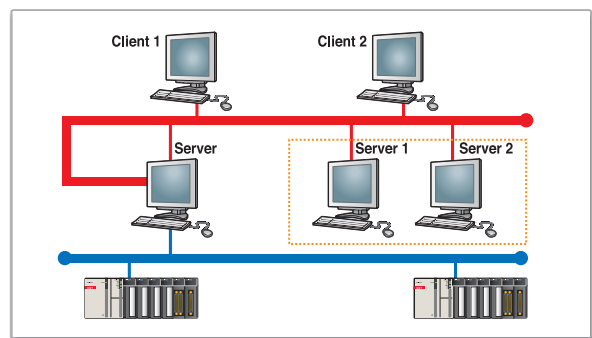
Stand Alone System

A separate system is installed to monitor and control the data status of multiple devices.



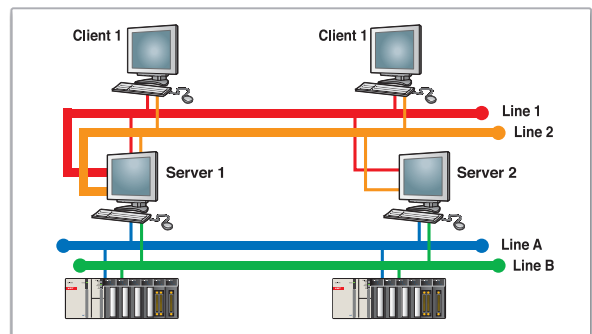
Client/Server System

Remote/Multiple monitoring and control of system



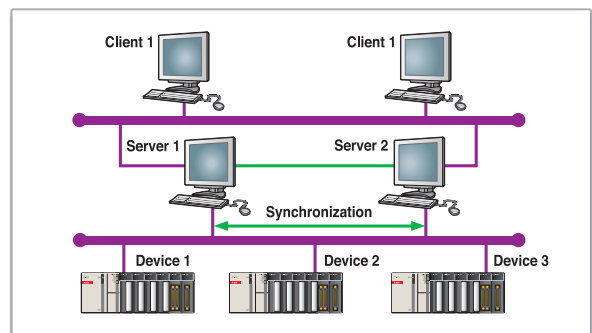
Line Duplexing

- Possible to structure dual Port and Line of Device such as PLC
- It dualizes Server 1, Server 2 and Ethernet Port of Client.



Redundancy System

- A reliable system can be constructed through an auto switch using Standby Server when Primary Server is in failure.
- Manual switch: A manual switch is possible at menu operation and script.
- Time synchronization between Server 1 & Server 2
- Monitor any failures at Partner Server that uses RS-232C communication line.
- Project Duplicator: Prevent errors and provide user-convenience by duplicating the dual projects automatically.



Support of Various Industrial Standards

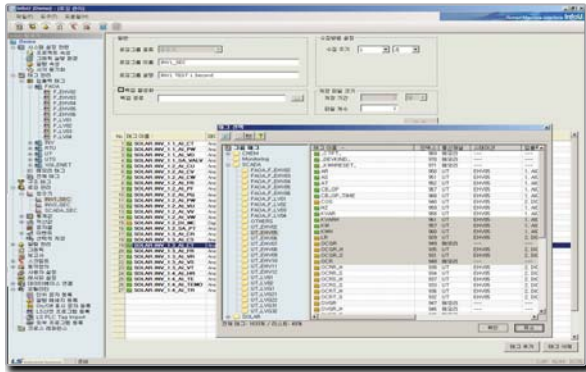
It can be easily connected to other systems or MES/ERP by supporting various industrial protocols such as OLE DB, OPC and etc.

- OPC DA Server can select a tag to share and can prevent significant tags to be opened to external applications.

- OPC DA supports client/server.
- Using a database link function, the data of ORACLE/MS SQL Server can be easily exchanged with the tag.

Various & Convenient Data Collecting Models

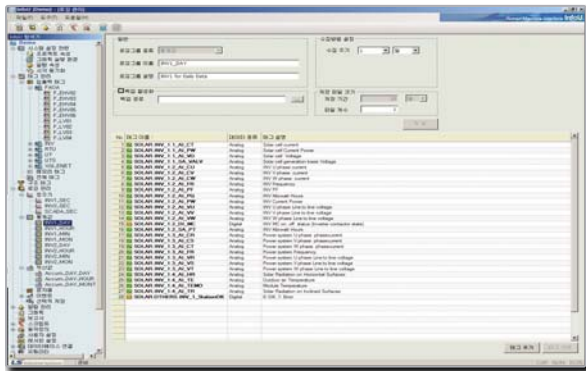
InfoU offers various types of storage methods to easily manage the collected data and helps the users to easily access the saved data by using various graphic objects and integrated reports.



Various Data Logging Methods

It supports various storage methods such as fixed-cycle, event, statistics and so forth for the users to easily create a storage model.

- Fixed-Cycle: It saves tag values for every fixed-cycle.
- Statistical Value: It saves the statistical data for every fixed-cycle.
- The variation of integrated data is saved by hour, day and month unit.
- Event: It saves the data once at a specific condition.
- Selective Storage: It saves the data periodically when it meets a specific condition.
- It is possible to assign maximum of 400 history models and one tag can register several models.
- The collected data can be used at trend objects, reports and etc.



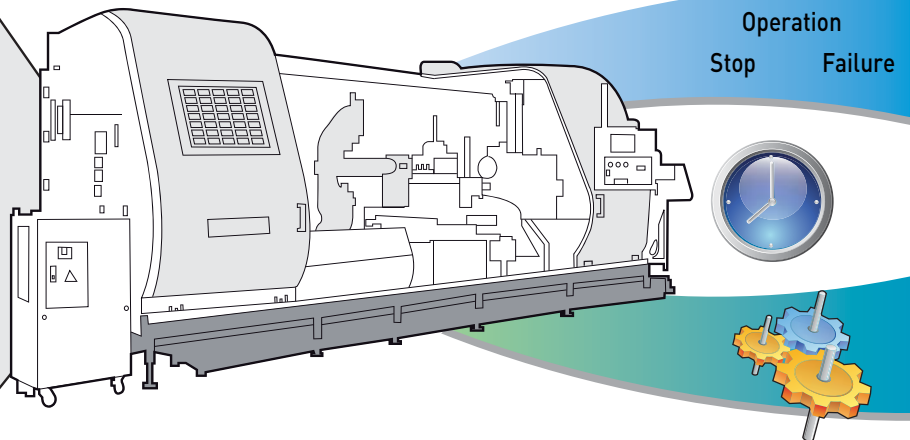
Efficiency via Auto Creation of Statistical Data

InfoU can create a statistical data without using an external application or a separate script.

- It is easy to create complicated reports using statistical data.
- Calculated statistical data can be used directly at a trend and etc.
- It automatically calculates and provides the maximum value, minimum value, mean, maximum time and minimum time of analogue.
- In case of a digital tag, its holding time, operating numbers and so on can be directly created.

Support for Various Administrative Tasks with Fast and Easy Application Development

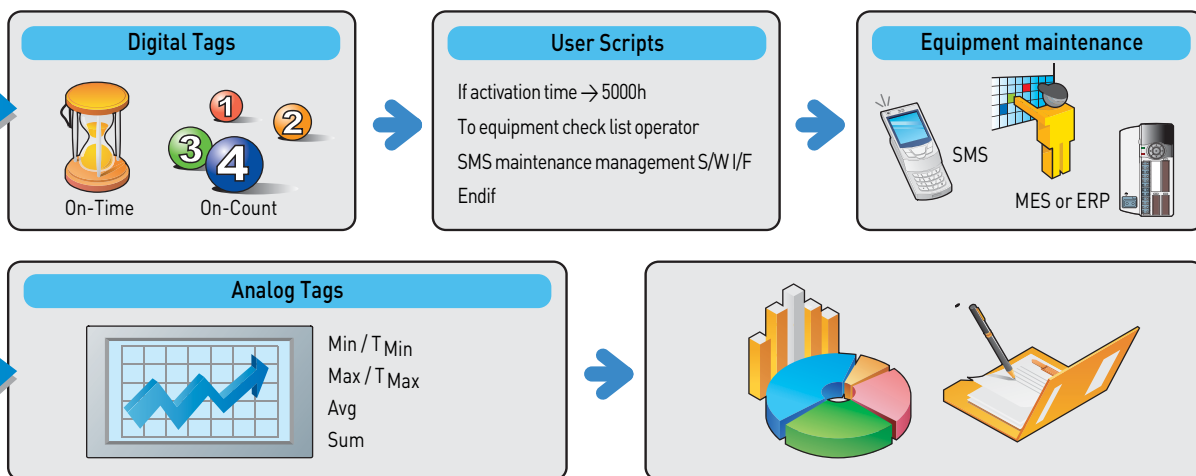
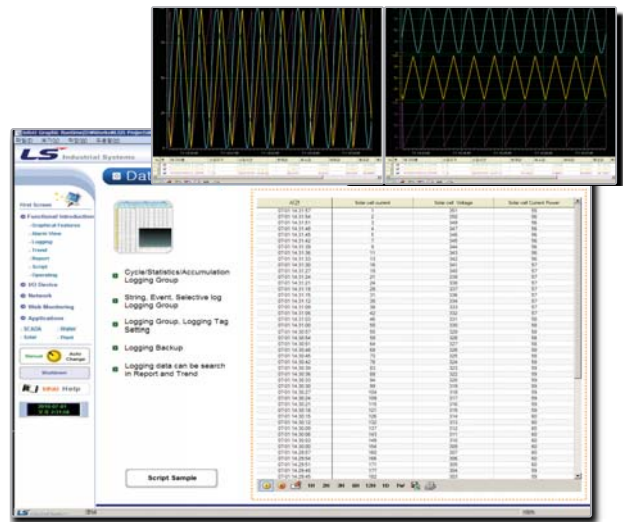
Statistical data may be configured using parameters only, without separate scripts or external applications, so that a wide variety of applications may be developed quickly and efficiently.



Logging Data View

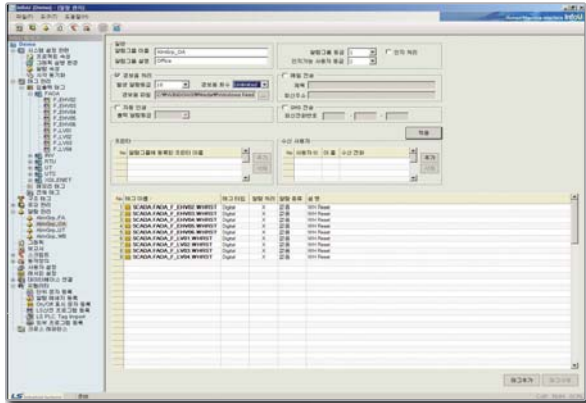
InfoU provides a powerful analysis tool to analyze the saved data so that the users can analyze the collected data with ease and promptness.

- Users can easily analyze the trend using various trend objects.
- External users can check the collected data using a Web Server via a Web Browser.
- Data of the desired period can be saved using a backup function.
- It is easy to print out the reports on collected data using a report function.
- It is easy to access the data saved in the external application using InfoU external expansion API.



Easy & Intelligent Alarm Management

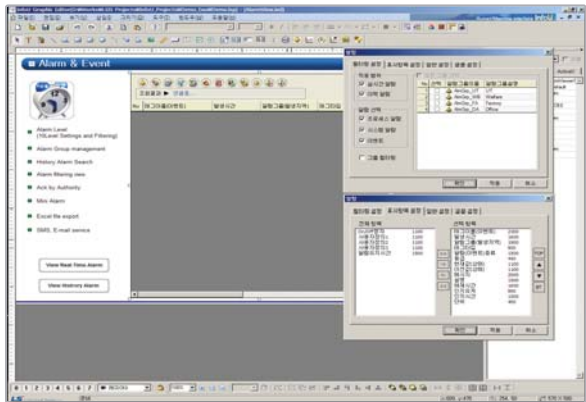
InfoU uses an intelligent alarm function for an easy configuration of various operations including alarm generation, alarm history management, printout using a printer, sending SMS text messages and etc. This function enables the users to promptly identify the problems so as to minimize the downtime of equipments.



Convenient Setting using Alarm Group

InfoU sets the function of alarm tag registered in the tag for each group to define the operation easily.

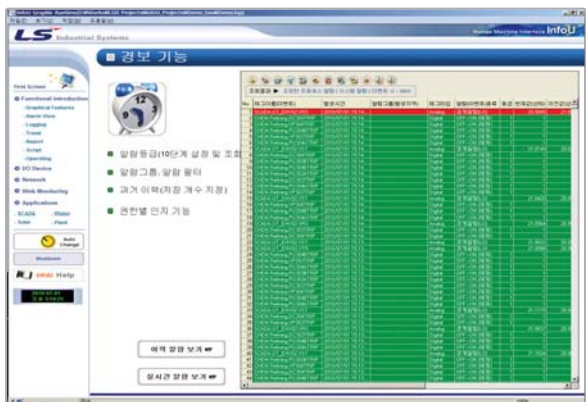
- Alarm information can be registered during the tag setting.
- The operation during the generation of alarm can be defined via an alarm group.
- An alarm by region and by user can be formed through the alarm group.



Various Alarm Settings

InfoU defines various types of alarms including the boundary value of analogue and several alarm attributes can be used in redundancy.

- In case of a tag output and system failure, it is registered automatically as an alarm/event.
- When a noise is generated through dead band and filter, a stable alarm operation can be defined.
- An alarm attribute value can be modified / saved even during the runtime execution.



Various Alarm Functions

InfoU uses various functions such as alarm generation, alarm history management, printout of a printer, sending SMS text messages and so on to help the users identify the alarm status easily.

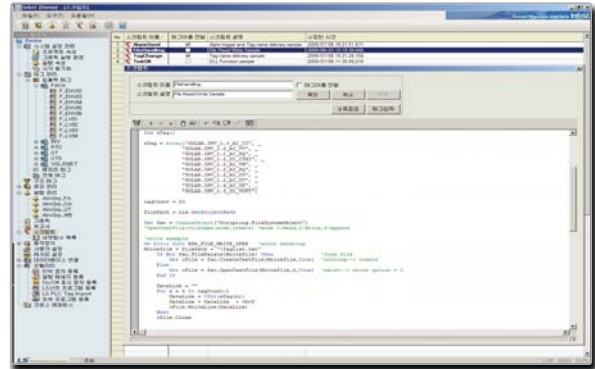
- It uses an alarm function to output the Wave File designated by users via a sound card when a specific alarm is generated.
- When an alarm is generated, an alarm message can be sent to cellular phones as a text message or to email.

Schedule Management for Improvement of Functions & Script Function

InfoU provides a powerful scripter that is based on VBS (Visual Basic Scripter). Users can construct their own functions or library by expanding the basic functions offered through the scripter. In addition, it provides a schedule management function that enables to drive operations such as recipe, database link, and script run based on time, tag value and alarm state.

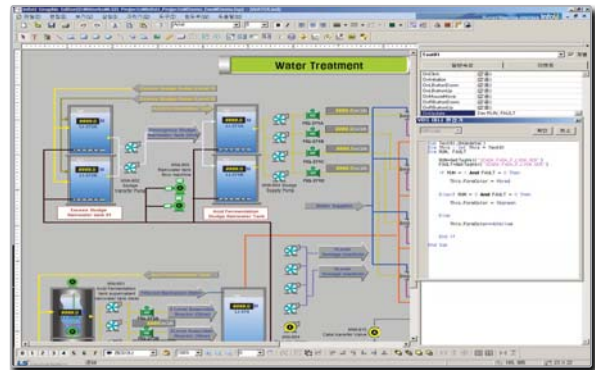
System Script

- InfoU Script is based on VBS. The script not only controls the tag value, state, and so on, but also access the graphic object state, alarm state, and so forth to control them.
- The basic editor offered helps the users to program the script easily and hundreds of internal functions can reflect the requirements of users.
- It is 100% compatible with VBS of Microsoft Company.
- COM, OLE Objects can be inserted.
- A text color of VB style and Dot Operation are supported.
- It has a function to check grammatical errors.



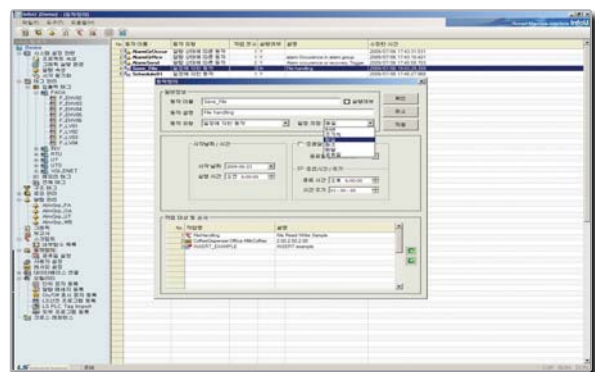
Use VBS at Graphic Editor

- VBS can be used to control the objects during runtime operation at the graphic editor.
- VBS can be applied to events such as change/mouse operations of dynamic characteristic.



Various Operating Conditions & Schedule Management

- Holidays can be managed.
- It enables to set daily, weekly, monthly and yearly schedules.
- It enables to select the relevant date.
- It enables to select a schedule and periodic operation.
- It enables to assign an operation based on the change of tag data.
- It enables to assign an operation based on the tag and alarm state of an alarm group.



VB Script Debugging

- It can debug the created script error.
- It has a function to check VB grammatical errors during editing in order to prevent mistakes of users in advance.
- A preview function of the graphic editor can be used to check the script error in advance.
- A script debugging and logging is possible during the runtime operation.

Various Functions Support

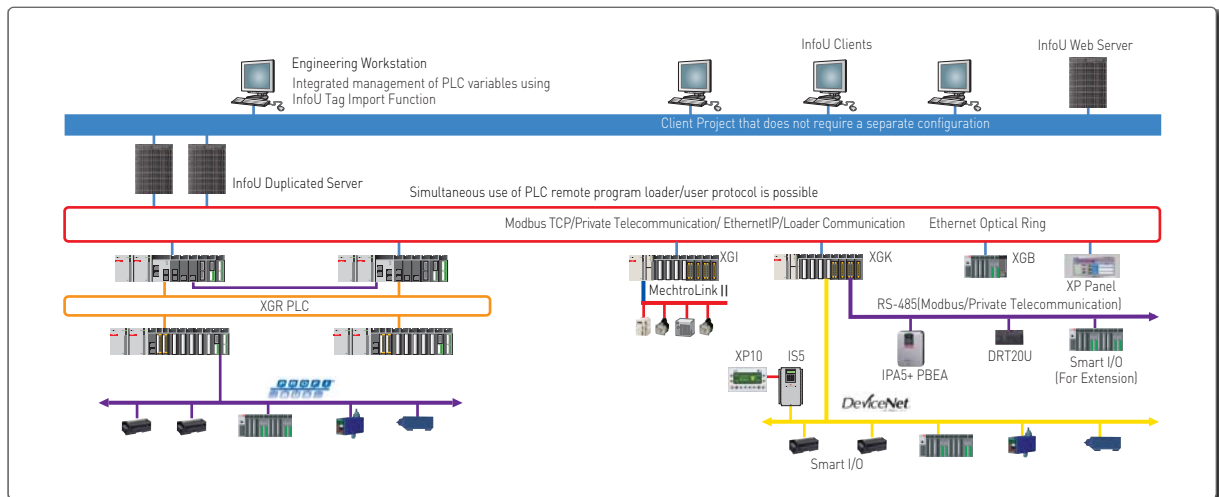
- It provides various functions that can control InfoU using VB Scripter.
- A file operation is possible.
 - Users can directly create, operate and delete files.
- By using COM, OLE Object via VB, it is possible to drive external applications including the third-part Active-X Control and Excel.
- User alarm can be created by VB.

InfoU Client/Server System, a type where a client embeds all information from a server, does not require a client setting. Therefore, users can construct a system by only building a server which allows easy and quick configuration of SCADA System.

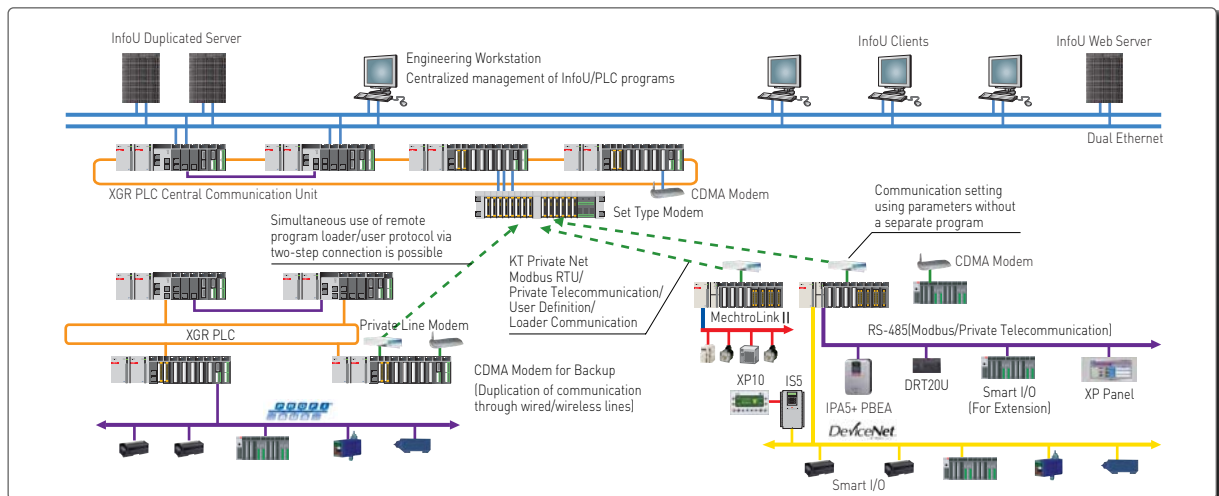
Overview on InfoU SCADA System

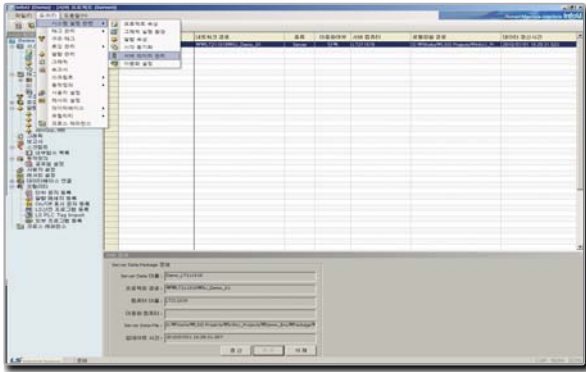
- SCADA System is an abbreviation for “Supervisory Control And Data Acquisition System” and it is also referred to as “Centralized Remote Monitoring/Control System.”
The required main functions are specified in ANSI (American National Standards Institute) / IEEE (Institutes of Electrical and Electronics Engineers) Std c37.1-1987 as shown below.
 - An alarm function of the monitoring system that performs predefined operations based on the alarm status of a remote device
 - A monitoring/control function that operates the external remote device manually/automatically (optional) or in combination of manual and automatic operations
 - An indicator (display) function of the monitoring system that receives, displays and records the information on remote device status
 - An accumulation function that displays and records the information on digital pulse through reception and summation
 - A function to recognize the predefined events and to provide the data on generated events
- InfoU SCADA System provides functions that satisfy these requirements and offers far advanced functions to users for an easy system configuration. Thus, an application of InfoU SCADA System will save your time and money.

InfoU SCADA System Block Diagram



Private-Line Based InfoU SCADA System Block Diagram

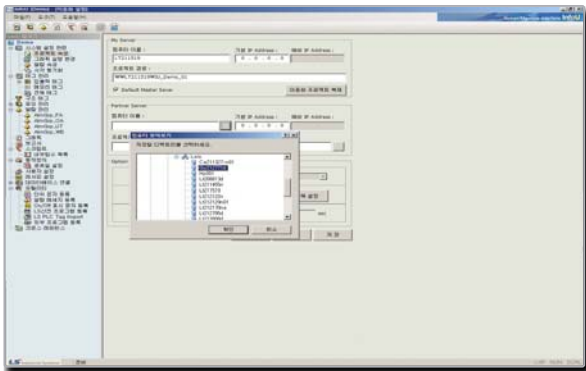




Simple Server Project Setting

InfoU does not require a separate project for the server project. The existing project can be directly changed by changing the project attributes.

- Users can monitor the system status using the server tag created automatically.
- The client can directly use all the set information (tag, drawing and etc) by embedding the server data.
- When the server set files including drawings are changed, the client automatically reflects them.



Stable Operation through Dual System

When a dual system is constructed, the system can be operated without a server interruption.

- In case of a server failure, the client automatically switches the server so that the system can run without any interruption.
- When constructing the dual system, the project of auxiliary server can be set automatically so the dual setting can be done easily.
- Switching servers is possible based on the user-defined setting such as a communication failure and so on.



Convenient Creation of Reports using Wizard Function

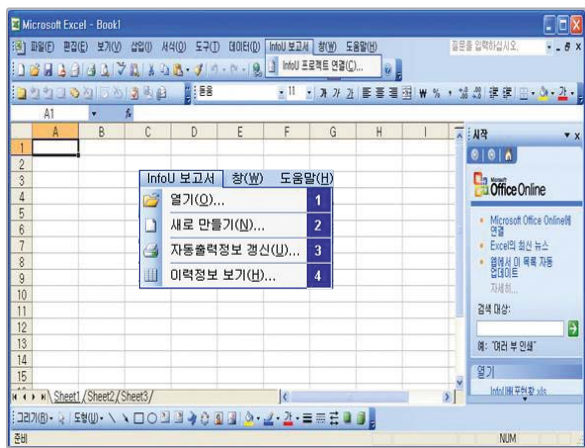
InfoU provides a wizard function that allows the developers and operators to easily create a form and helps to build a report system.



❏ A report is equipped with a wizard function that enables the developers and operators to register the report form without any additional skills.

When the collection model is selected, the tag list that belongs to the model is displayed at the lower section and the selectable data type varies according to the collection model type.

- Fixed-Cycle: Current analogue value, current digital status
- Statistical Value (Analogue): Current value, minimum value, maximum value, minimum time, maximum time, mean, sum and number of samplings
- Statistical Value (Digital): ON counts, runtime, number of changes
- Integrated Value (Analogue): Variations
- It is possible to print or save daily, weekly and monthly reports automatically and the duration can be assigned when saving them.
- Users can select any report forms at anytime to print them out.

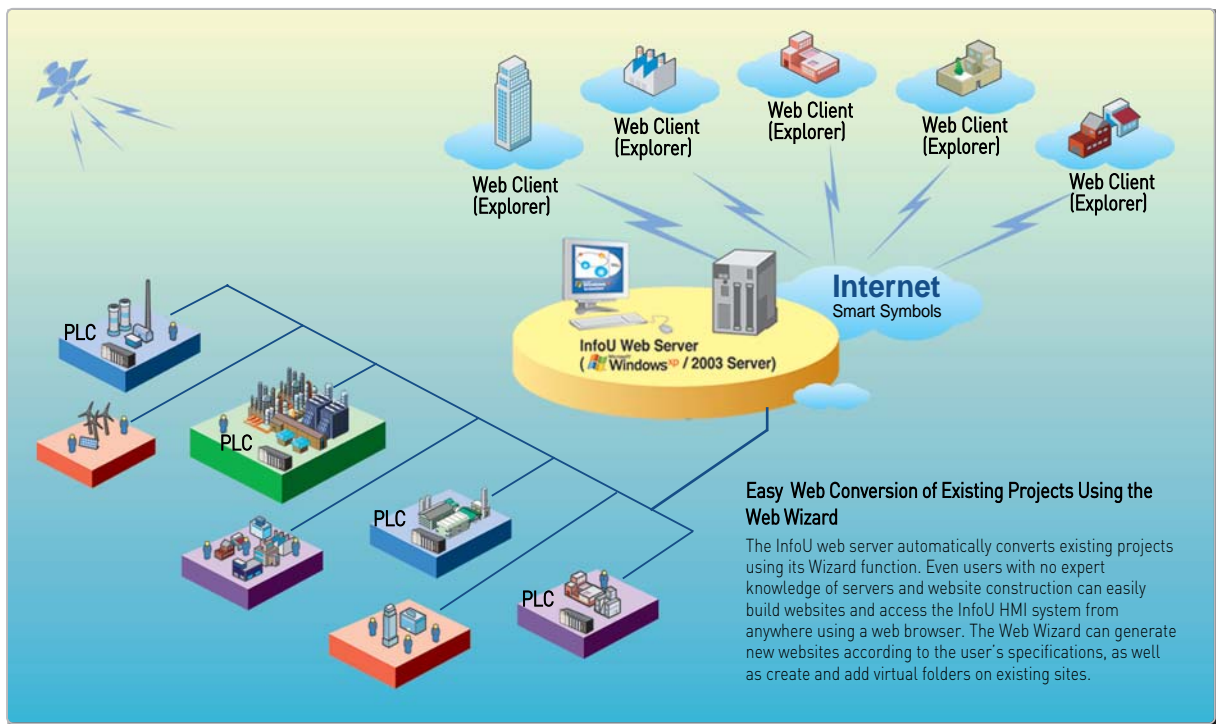


❏ InfoU Report can create or print Excel files at a designated time by inquiring the logging data defined in the logging group.

- It is possible to print out hourly, daily, weekly, monthly, yearly and temporary reports at any desired time.
- It is convenient to create similar types of reports using a report duplication function.
- It is easy to create a report layout using drag and drop method.
- It uses the Excel File format so the functions of Excel such as graph, diagram, form, statistics and so forth can also be used.
- Tags that are used in the reports can be inquired at cross reference which enables to check its usage in the reports during the deletion and modification of tags.

InfoU Web Server

InfoU can share the projects created using the web-wizard function via the web browser automatically.



Ordering Information

Item	Product	Description	Item	Product	Description	
Developer and Runtime Version	InfoU-RC-75	75 tags	Web Version	InfoU - OP - WEB2	2 Users / Unlimited tags	
	InfoU-RC-150	150 tags		InfoU - OP - WEB5	5 Users	150 tags
	InfoU-RC-500	500 tags				500 tags
	InfoU-RC-1K	1,000 tags				1,000 tags
	InfoU-RC-2K	2,000 tags				2,000 tags
	InfoU-RC-MAX	Unlimited tags				Unlimited tags
Runtime Version	InfoU-RT-75	75 tags		InfoU - OP - WEB10	10 Users / Unlimited tags	
	InfoU-RT-150	150 tags		InfoU - OP - WEBMAX	Unlimited Users	150 tags
	InfoU-RT-500	500 tags				500 tags
	InfoU-RT-1K	1,000 tags				1,000 tags
	InfoU-RT-2K	2,000 tags	2,000 tags			
	InfoU-RT-MAX	Unlimited tags	Unlimited tags			

Green Innovators of Innovation



Safety Instructions

- For your safety, please read user's manual thoroughly before operating.
- Contact the nearest authorized service facility for examination, repair, or adjustment.
- Please contact qualified service technician when you need maintenance. Do not disassemble or repair by yourself !
- Any maintenance and inspection shall be performed by the personnel having expertise concerned.

LSIS Co., Ltd.

© 2011.03 LSIS Co., Ltd. All Rights Reserved.

■ HEAD OFFICE

LS Tower 1026-6, Hoge-dong, Dongan-gu, Anyang-si,
Gyeonggi-do 431-848, Korea

- **NORTH AMERICA/EUROPE/CIS** +82-2-2034-4676 sukyong@lsis.biz
- **ASIA/LATIN AMERICA** +82-2-2034-4888 cshwang@lsis.biz
- **MIDDLE EAST/AFRICA/TURKEY** +82-2-2034-4881 khchoi1@lsis.biz

■ Global Network

- **LSIS Detroit Office >> Detroit, USA**
Address 5700 Crooks Rd Suite 211 Troy, MI 48098, Detroit, USA
Tel +1-248-792-2638 Fax +1-248-792-2642 E-mail sylee@lsis.biz
- **LSIS Europe B.V. >> Amsterdam, Netherlands**
Address 1st. Floor, Tupolevlaan 48, 1119NZ, Schiphol-Rijk, The Netherlands
Tel +31-20-654-1420 Fax +31-20-654-1429 E-mail junshickp@lsis.biz
- **LSIS(ME) FZE >> Dubai, U.A.E.**
Address Jafza View Tower Lob 19, Room 205 Along Sheikh Zayed Road Jebel Aali Free Zone Dubai,
United Arab Emirates.
Tel + 971-4-886-5360 Fax + 971-4-886-5361 E-mail jungyongl@lsis.biz
- **LSIS(Dalian) Co., Ltd >> Dalian, China**
Address No. 15 Liaohexi 3-Road. Economic and Technical Development zone. Dalian 116600. China
Tel +86-411-8730-7510 Fax +86-411-8731-8277 E-mail cuihx@lsis.com.cn
- **LSIS(Wuxi) Co., Ltd >> Wuxi, China**
Address 102-A. National High & New Tech Industrial Development Area. Wuxi.
Jiangsu. 214028. P.R. China
Tel +86-510-8534-6666 Fax +86-510-8534-4078 E-mail caidx@lsis.com.cn
- **LS-VINA IS Co., Ltd >> Hanoi, Vietnam**
Address Nguyen Khe Dong Anh, Hanoi
Tel +84-4-38820 222,3 Fax +84-4-38820 220 E-mail srjo@lsisvina.com, ylsuk@lsisvina.com
- **LSIS Tokyo Office >> Tokyo, Japan**
Address 16FL. Higashi-Kan. Akasaka Twin Tower 2-17-22. Akasaka. Minato-ku Tokyo 107-0052. Japan
Tel +81-3-3582-9128 Fax +81-3-3582-2667 E-mail jschuna@lsis.biz

- **LSIS Shanghai Office >> Shanghai, China**
Address Room E-G, 12FL Huamin Empire Plaza. No.726. West Yan'an Road Shanghai 200050. P.R. China
Tel +86-21-5237-9977(501) Fax +89-21-5237-7189 E-mail liyong@lsis.com.cn
- **LSIS Beijing Office >> Beijing, China**
Address B-Tower 17FL. Beijing Global Trade Center. No. 36. East BeisanHuan-Road. DongCheng-District.
Beijing 100013. P.R. China
Tel +86-10-5825-6027(666) Fax +86-10-5825-6028 E-mail xunmj@lsis.com.cn
- **LSIS Guangzhou Office >> Guangzhou, China**
Address Room 1403.14FL. New Poly Tower. 2 Zhongshan Liu Road.Guangzhou.P.R.China
Tel +86-20-8326-6754 Fax +86-20-8326-6287 E-mail chenxs@lsis.com.cn
- **LSIS Chengdu Office >> Chengdu, Chi**
Address Room 1710.17FL. Huamin Empire Plaza. No.1 Fu Xing Street.Chengdu.610016. P.R. China
Tel +86-28-8670-3201 Fax +86-28-8670-3203 E-mail yangcf@lsis.com.cn
- **LSIS Qingdao Office >> Qingdao, China**
Address Room 2001.YinHe Bldg. No. 29 Shandong Road, Qingdao. 266071, P.R. China
Tel +86-532-8501-6058 Fax +86-532-8501-6057 E-mail wangzy@lsis.com.cn

Specifications in this catalog are subject to change without notice due to continuous product development and improvement.